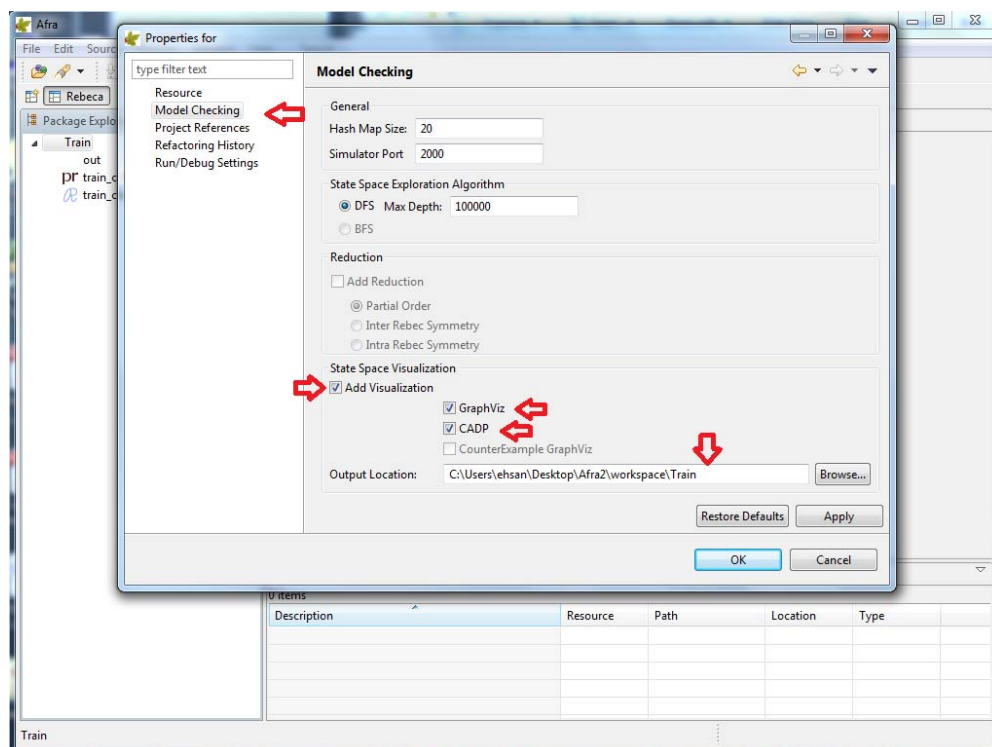
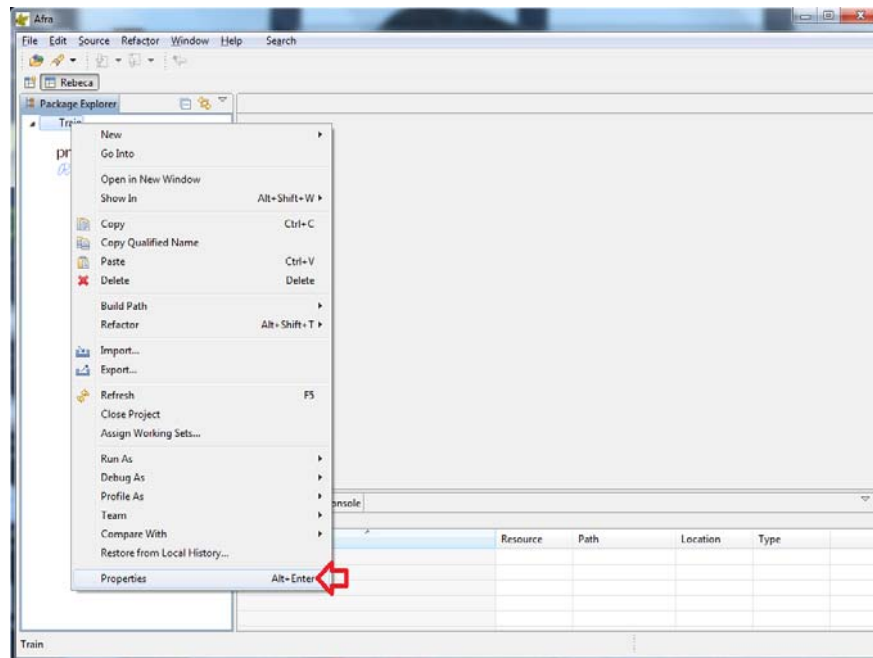
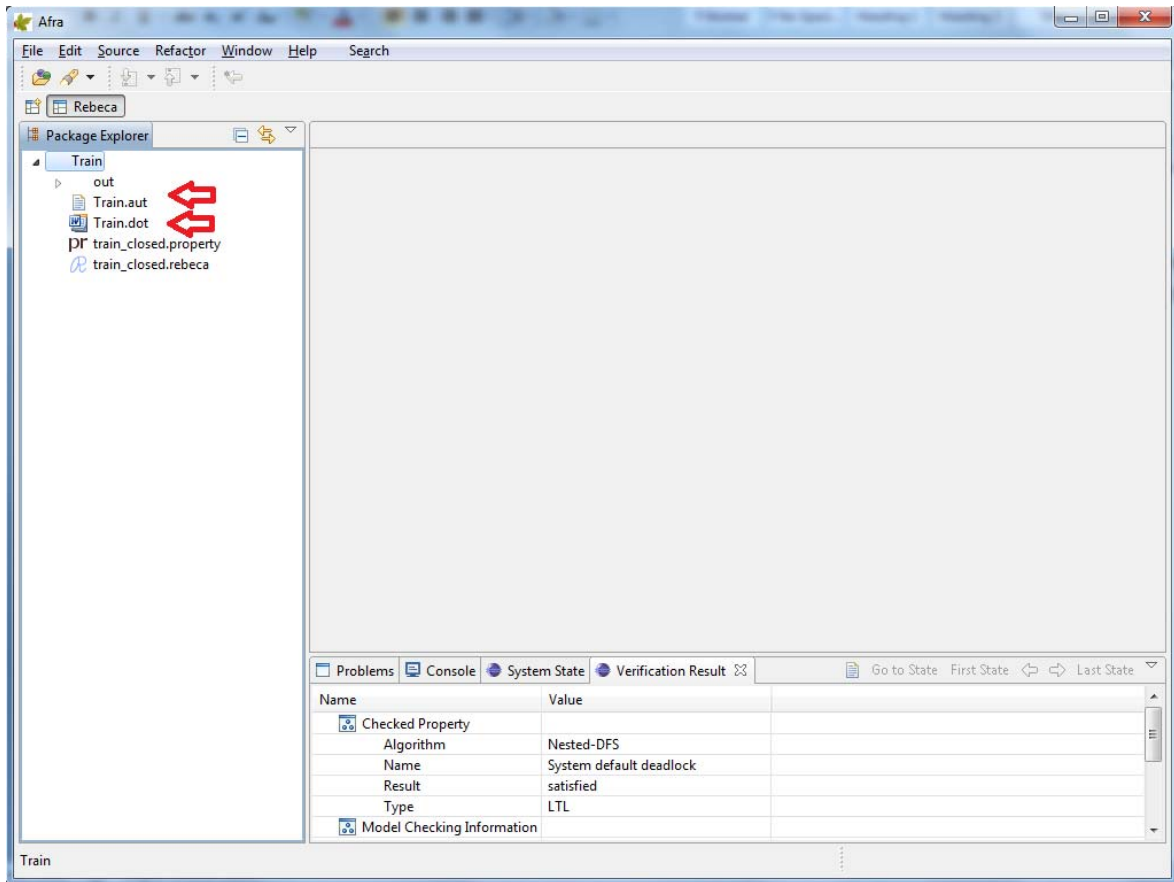


How to visualize the State Space

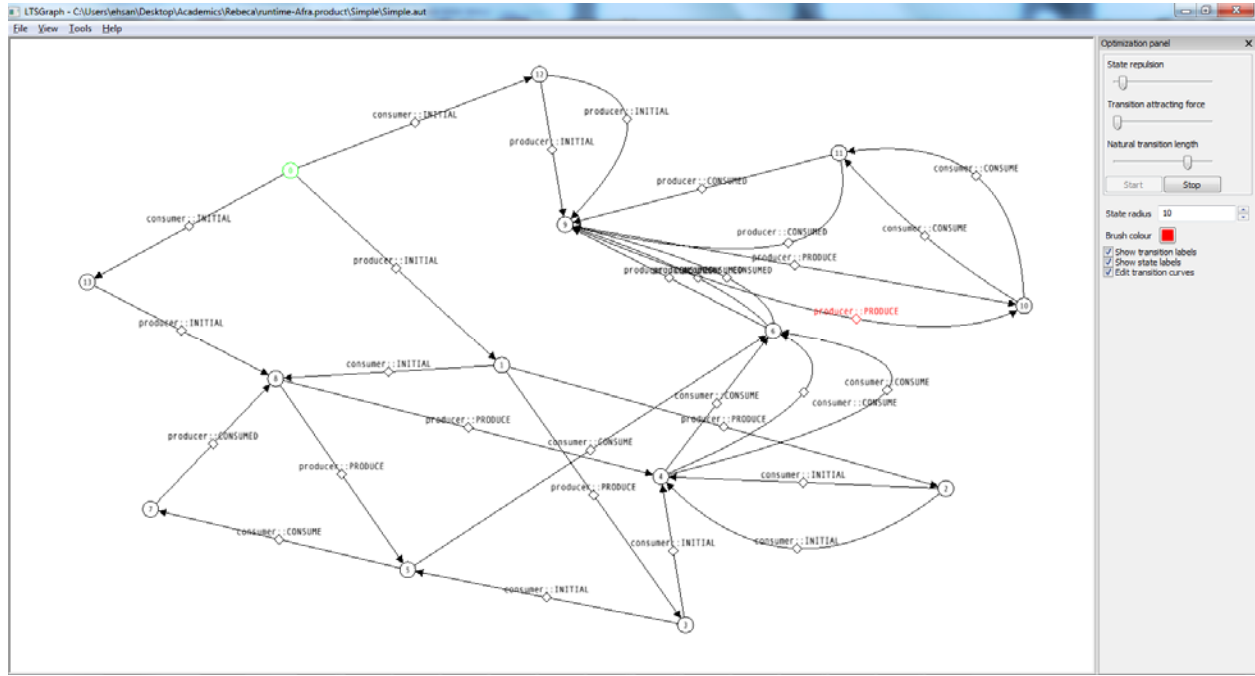
1. Modify the “Rebeca Project Property” to enable store the state space in a file. The result files could be “GraphViz” or “CADP” files.



2. After model checking a model, the state space is generated at the user defined location. In the above sample, the output location is the project. As both CADP and GraphViz checkboxes are selected, the state space exported in two files "Train.aut" and "Train.dot". These generated files names are like the project name.



3. Download mCRL2 toolset from <http://www.mcl2.org/mcl2/wiki/index.php/Download> to visualize "*.aut" files.
4. Install the downloaded file and execute the "Itsgraph.exe" to open the state space visualization tool.
5. The result view should be something like below.



6. Download GraphViz toolset from <http://www.graphviz.org/Download.php> to visualize “*.dot” files.
7. Install the downloaded file and execute the “gvedit.exe” to open the graph generator tool.
8. The result file is an image while should be like below.

